



GRANDIOSO

SINCE 1922
J&N
PAINTS **Jenson &
Nicholson**
Whenever you see colour, think of us

Special
effects
Designer Finishes



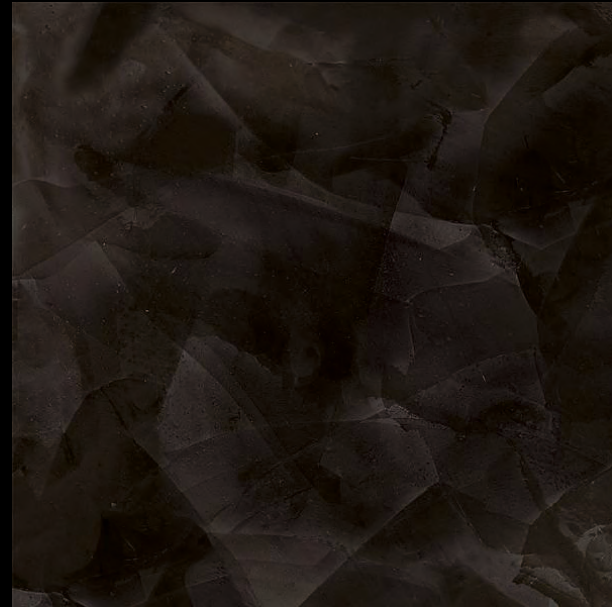
Jenson & Nicholson established its presence in India, in the year 1922 and the company is considered India's second oldest paint company. In 2016, Jenson & Nicholson India Limited and Sheenlac collaborated to form the joint venture Jenson & Nicholson Paints Private Limited (JNPL), with the intent to revive the brand and build a viable alternative in the retail Decorative Paint market in India. In 2024, Sheenlac acquired Jenson & Nicholson India Limited paints marking a significant milestone in its growth journey.

Jenson & Nicholson Paints Private Limited (JNPL) embarked on a journey to renew and revamp the brand Jenson & Nicholson in the retail decorative paint market, taking into account the brand's gradually declining presence, owing to challenging circumstances, over the years. Today, team Sheenlac has established its absolute ownership of the brand and it aspires to revive J&N brand and propel it to greater heights!

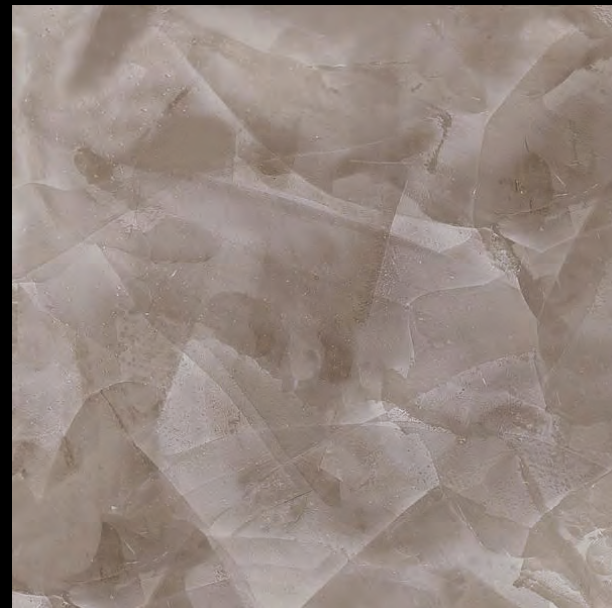
JNPL has began re-establishing the INSTA COLOR brand which was the pioneer in the tinting of shades and continues to exact high recall in the decorative paint segment, till date. Moreover, the company has introduced many high-quality formulations in the South Indian market that is renowned for being extremely quality conscious. Jenson & Nicholson Paints Private Limited (JNPL) has adopted aggressive and agile R&D efforts to innovate and produce market first products and solutions!

Grandioso presents a mural mineral coating that transcends expectations. Crafted for indoor spaces, these high-level transpiration coatings offer a glossy finish reminiscent of mirror surfaces.

Antique Glossy Effect



Brunette Brown A



Brunette Brown D

ANTIQUÉ GLOSSY EFFECT



Black Tempal A



Black Tempal A

Coating Sequence:

- 1st Coat: JN Speciality Primer
- 2nd Coat: Grandioso
- 3rd Coat: Grandioso
- 4th Coat: Grandioso



Charcoal Hex A



Charcoal Hex B



Charcoal Hex C



Charcoal Hex D



Charcoal Hex A



Black Tempal A



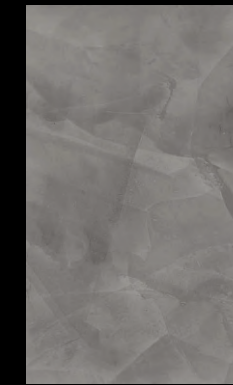
Black Tempal B



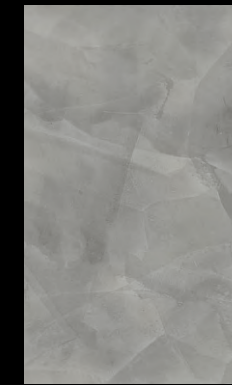
Black Tempal C



Black Tempal D



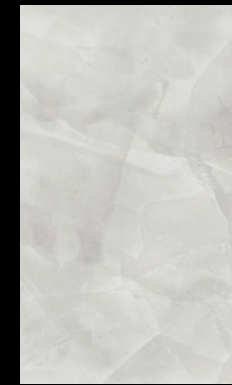
Realgres A



Realgres B



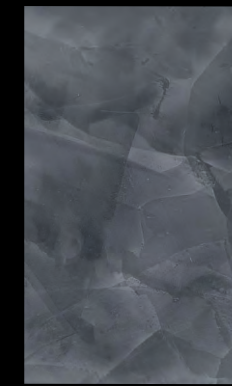
Realgres C



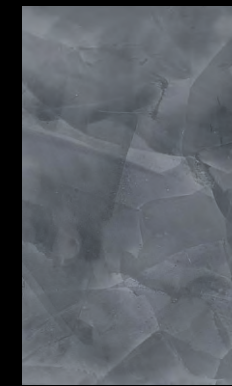
Realgres D



Aesthetic Black A



Aesthetic Black B



Aesthetic Black C



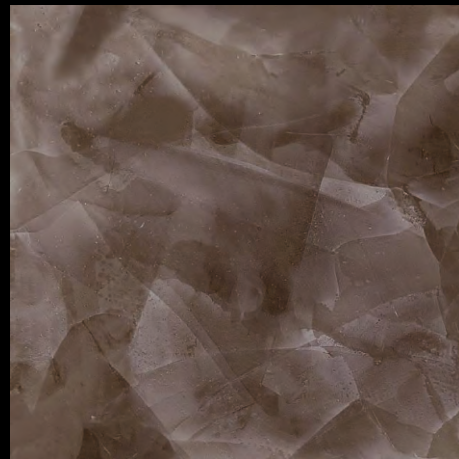
Aesthetic Black D



Brunette Brown A



Brunette Brown B



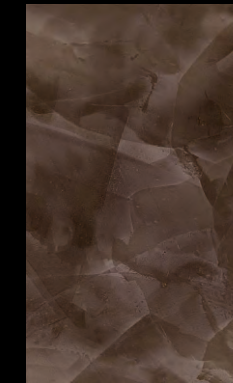
Brunette Brown C



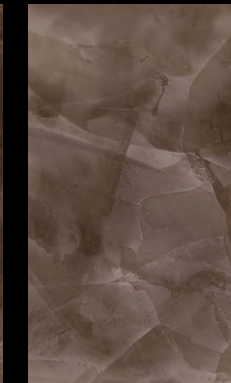
Brunette Brown D



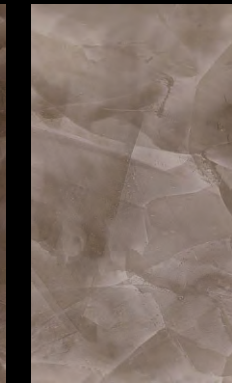
Brunette Brown B



Umber A



Umber B



Umber C



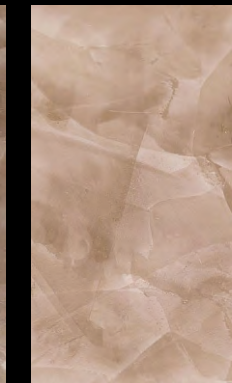
Umber D



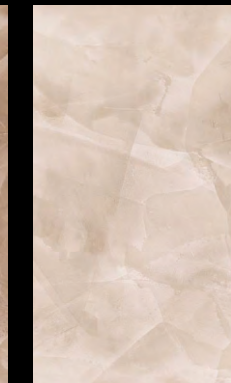
Light Brown Granules A



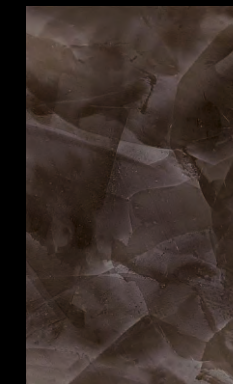
Light Brown Granules B



Light Brown Granules C



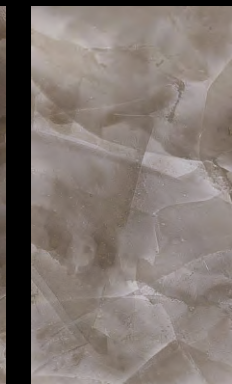
Light Brown Granules D



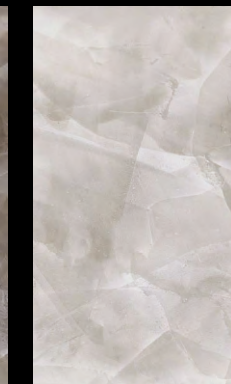
Taupe A



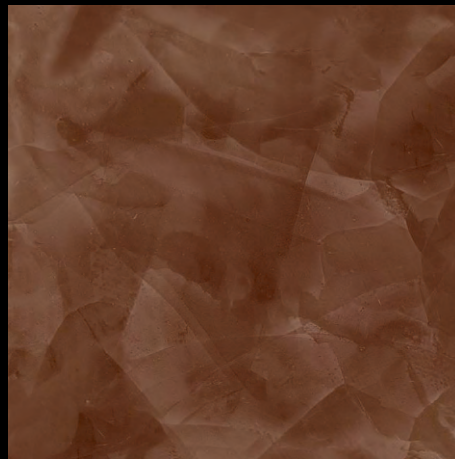
Taupe B



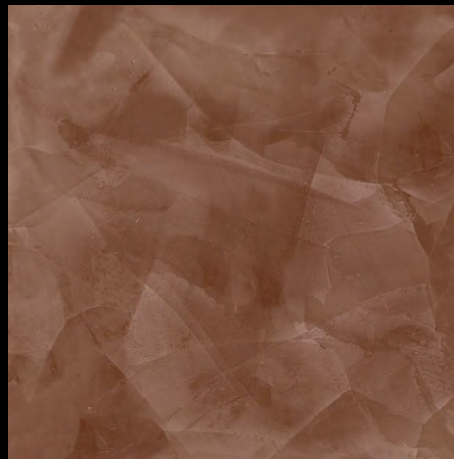
Taupe C



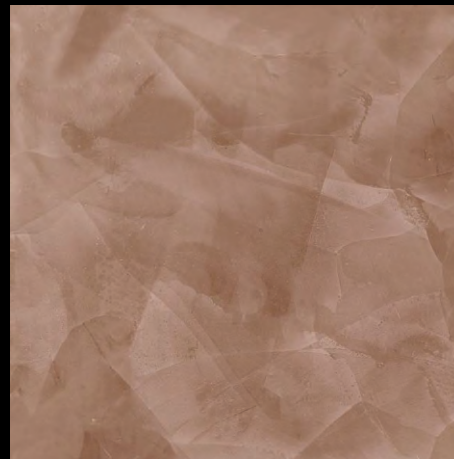
Taupe D



Coffee Bean A



Coffee Bean B



Coffee Bean C



Coffee Bean D



Silica Sand Brown A



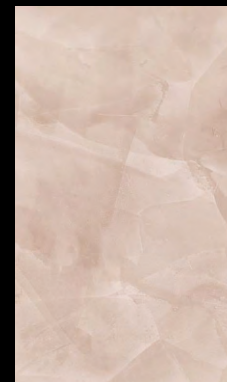
Cocoa Wood A



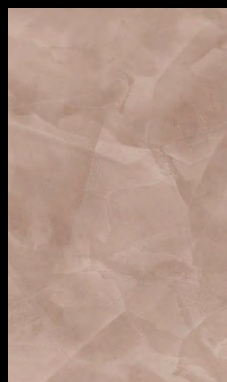
Cocoa Wood B



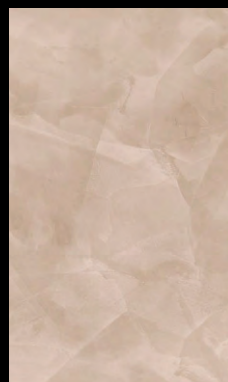
Cocoa Wood C



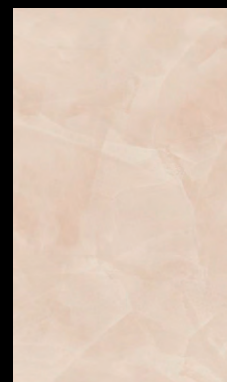
Cocoa Wood D



Silica Sand Brown A



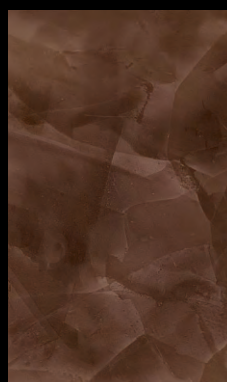
Silica Sand Brown B



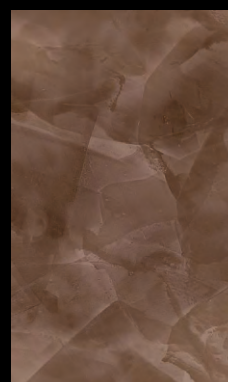
Silica Sand Brown C



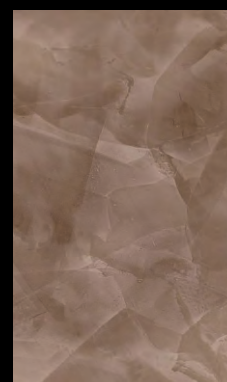
Silica Sand Brown D



Walnut Brown A



Walnut Brown B



Walnut Brown C



Walnut Brown D



Pine cone A



Pine cone B



Pine cone C



Pine cone D



Buff Yellow A



Buff Yellow A



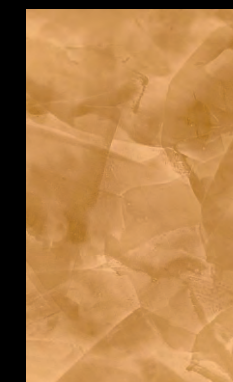
Buff Yellow B



Buff Yellow C



Buff Yellow D



Fawn A



Fawn B



Fawn C



Fawn D



Sunrise Sepia A



Sunrise Sepia B



Sunrise Sepia C



Sunrise Sepia D



Red Laterite A



Red Laterite B



Red Laterite C



Red Laterite D



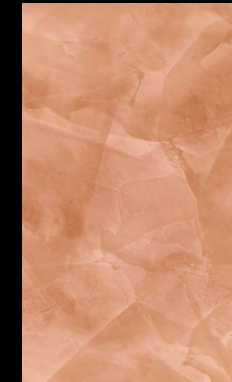
Red Oak A



Cherry Wood A



Cherry Wood B



Cherry Wood C



Cherry Wood D



Mahogany A



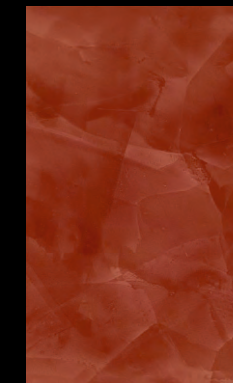
Mahogany B



Mahogany C



Mahogany D



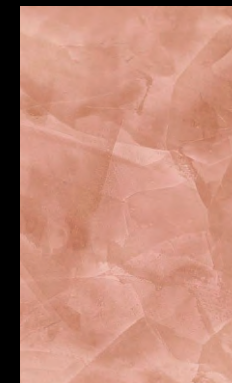
Red Oak A



Red Oak B



Red Oak C



Red Oak D



Red Stained Pinned Wood A



Red Stained Pinned Wood B



Red Stained Pinned Wood C



Red Stained Pinned Wood D



Vivid Orange A



Red Sandal A



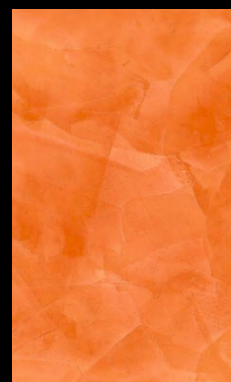
Red Sandal B



Red Sandal C



Red Sandal D



Vivid Orange A



Vivid Orange B



Vivid Orange C



Vivid Orange D



Yellow Merigold A



Yellow Merigold B



Yellow Merigold C



Yellow Merigold D



Milion Dollar Red A

Milion Dollar Red B

Milion Dollar Red C

Milion Dollar Red D



Shiraz Red C

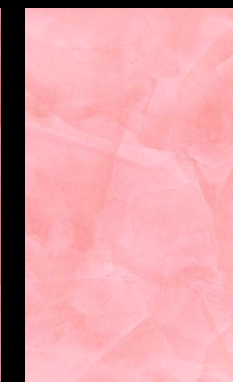


Fleshy Red A

Fleshy Red B

Fleshy Red C

Fleshy Red D

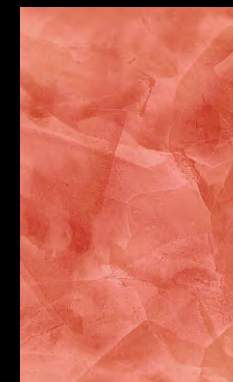


Shiraz Red A

Shiraz Red B

Shiraz Red C

Shiraz Red D

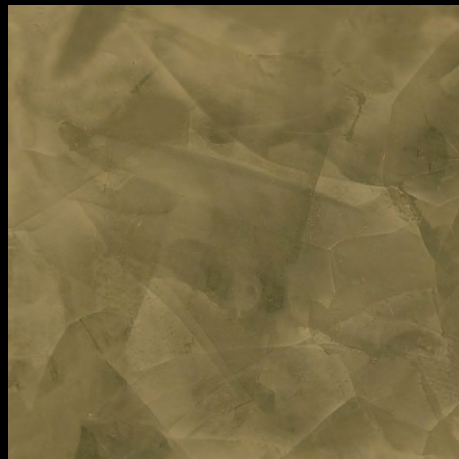


Indian Red A

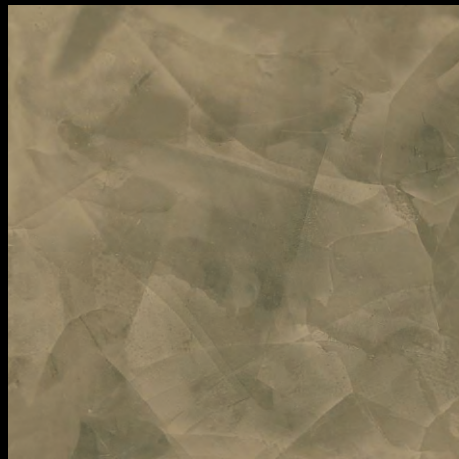
Indian Red B

Indian Red C

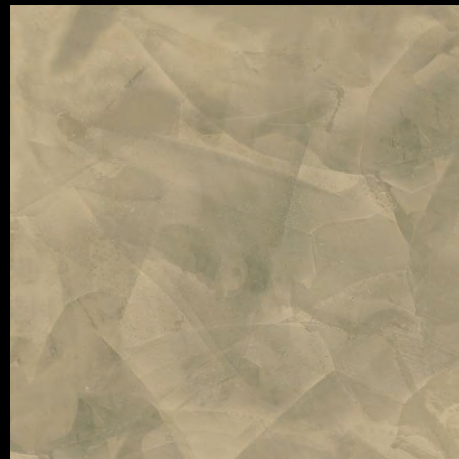
Indian Red D



Olive Green A



Olive Green B



Olive Green C



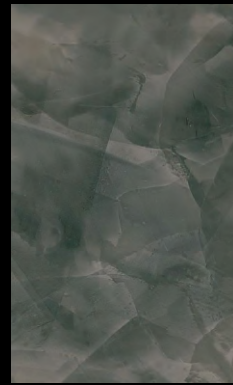
Olive Green D



Dark Jungle Green A



Dark Jungle Green A



Dark Jungle Green B



Dark Jungle Green C



Dark Jungle Green D



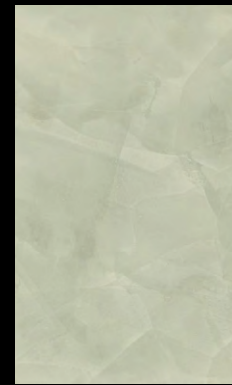
Laurel Green A



Laurel Green B



Laurel Green C



Laurel Green D



Lime Leaf Green A



Lime Leaf Green B



Lime Leaf Green C



Lime Leaf Green D



Chartreuse Jelly A



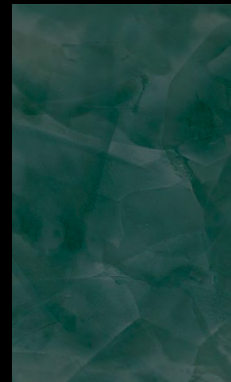
Chartreuse Jelly B



Chartreuse Jelly C



Chartreuse Jelly D



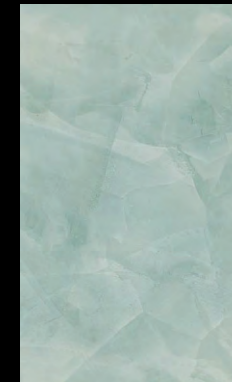
Boreal Forest A



Boreal Forest B



Boreal Forest C



Boreal Forest D



Deep Jungle Green A



Deep Jungle Green B



Deep Jungle Green C



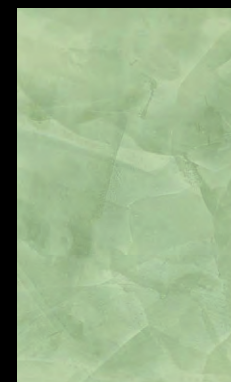
Deep Jungle Green D



Emerald Green A



Emerald Green B



Emerald Green C



Emerald Green D



Ocean Blue A



Ocean Blue B



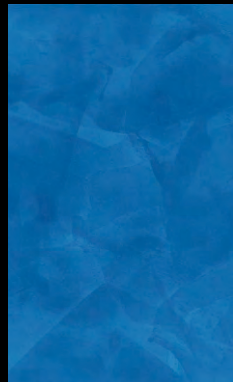
Ocean Blue C



Ocean Blue D



Cobalt Blue A



Cobalt Blue A



Cobalt Blue B



Cobalt Blue C



Cobalt Blue D



Royal Blue A



Royal Blue B



Royal Blue C



Royal Blue D



Cerulean Blue A



Cerulean Blue B



Cerulean Blue C



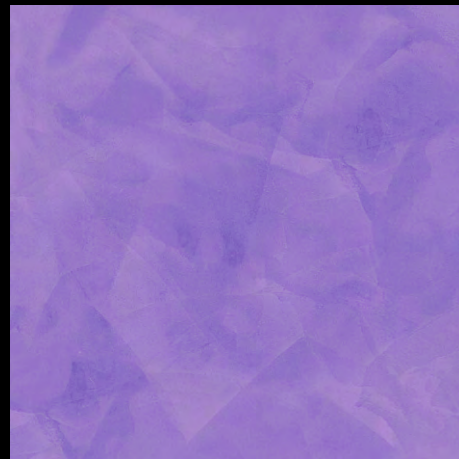
Cerulean Blue D



Kurinji A



Kurinji B



Kurinji C



Kurinji D



Dark Purple D



Aiden Garden Rose A



Aiden Garden Rose B



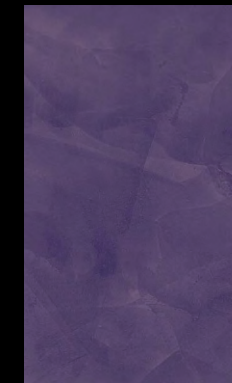
Aiden Garden Rose C



Aiden Garden Rose D



Dark Purple A



Dark Purple B



Dark Purple C



Dark Purple D



Cedar Brown A



Cedar Brown B



Cedar Brown C



Cedar Brown D

JENSON & NICHOLSON SPECIAL EFFECTS

Transform your living space into an embodiment of your personality and unique taste with JN Special effect designer finishes. It goes beyond being just a home; it's an expression of your persona and indulgences. Witness an unprecedented interplay of materials and patterns, thoughtfully curated for the modern home. The avant-garde yet sophisticated color palette offers a one-of-a-kind blend of classy and contemporary elements, ensuring that JN Special effect designer finishes brings the wow-factor to your living spaces. Tailored for today's homes, the finishes seamlessly integrate with the myriad elements of modern interior decor.

Explore our collection boasting 10 stunning finishes, promising to redefine the essence of luxury decor.

GRANDIOSO

GRANDIOSO presents a mural mineral coating that transcends expectations. Crafted for indoor spaces, these high-level transpiration coatings offer a glossy finish reminiscent of mirror surfaces. Elevate your interiors with the sophisticated touch of GRANDIOSO, providing not only aesthetic allure but also superior functionality.

New concrete, masonry or plaster: Allow the newly constructed cement surface to cure for minimum of 30 days, prior to application of J&N Acrylic Base Water Thinnable Cement Primer. Ensure that the wall to be painted is completely dry and free from any cement residue.

TO KNOW MORE
SCAN ME



TO BUY NOW
SCAN ME

APPLICATION: ANTIQUE GLOSSY EFFECT:



1.JN Speciality Primer



2.Grandioso 1st Coat



3.Grandioso 2st Coat



4.Grandioso 3st Coat



5.Polishing

Apply one coat of J&N Acrylic Base Water Thinnable Cement Primer at the recommended dilution level, using standard brush or spray application. Let it dry for minimum 4-5 hours and then apply Jenson White Cement based Wall Putty using Putty Knife. Allow it to dry for 4-6 hrs. Follow this with one more coat of JN Speciality Primer.

Antique Glossy effect with Grandioso: Apply Grandioso using the stainless steel trowel and creating a smooth and compact surface. After roughly 6 hours at 20°C, sand the surface thoroughly and then apply Grandioso with irregular strokes 6 - 10 cm long and spaced 4 - 6 cm apart, over the entire surface to be treated.

After roughly 1 hour at 20°C, start again from the beginning of the surface decorated with the first coat, applying strokes as described above but covering the surface so that each stroke partly overlaps those applied previously. When the product is almost dry, rework the surface in all directions by pressing on the surface and continue to apply the product with the trowel until obtaining a glossy or even reflective surface.

When Grandioso is almost dry, it should be polished by smoothing it with the spatula or stainless steel trowel, applying pressure to the product with strokes of spatula in all directions, continuing to spatulate until a shiny mirror surface is obtained/alternatively use polishing machine to get a shiny mirror surface.

Tools Required:



Roller



Trowel

Coverage : JN Speciality primer - 80 to 120 Sq.ft per Ltr
Grandioso - 70-80 Sq.ft Per Ltr on smooth surfaces for 2 coats (it may vary depending on roughness, porosity, absorption surface and application method)

Dilution Details:
JN Speciality primer - 15 to 20% with water
Grandioso - Ready to use

NOTE: Mix well before use ,Wash the tools with water, immediately after using,with water and soap.



**Address: No.76 B, GKS Estates, Block B,
Ambattur Ind. Estate, Chennai - 600 098**

Mail: ccc@sheenlac.in Number:



SINCE 1922
J&N
PAINTS
**Jenson &
Nicholson**
Whenever you see colour, think of us

Special
effects
Designer Finishes